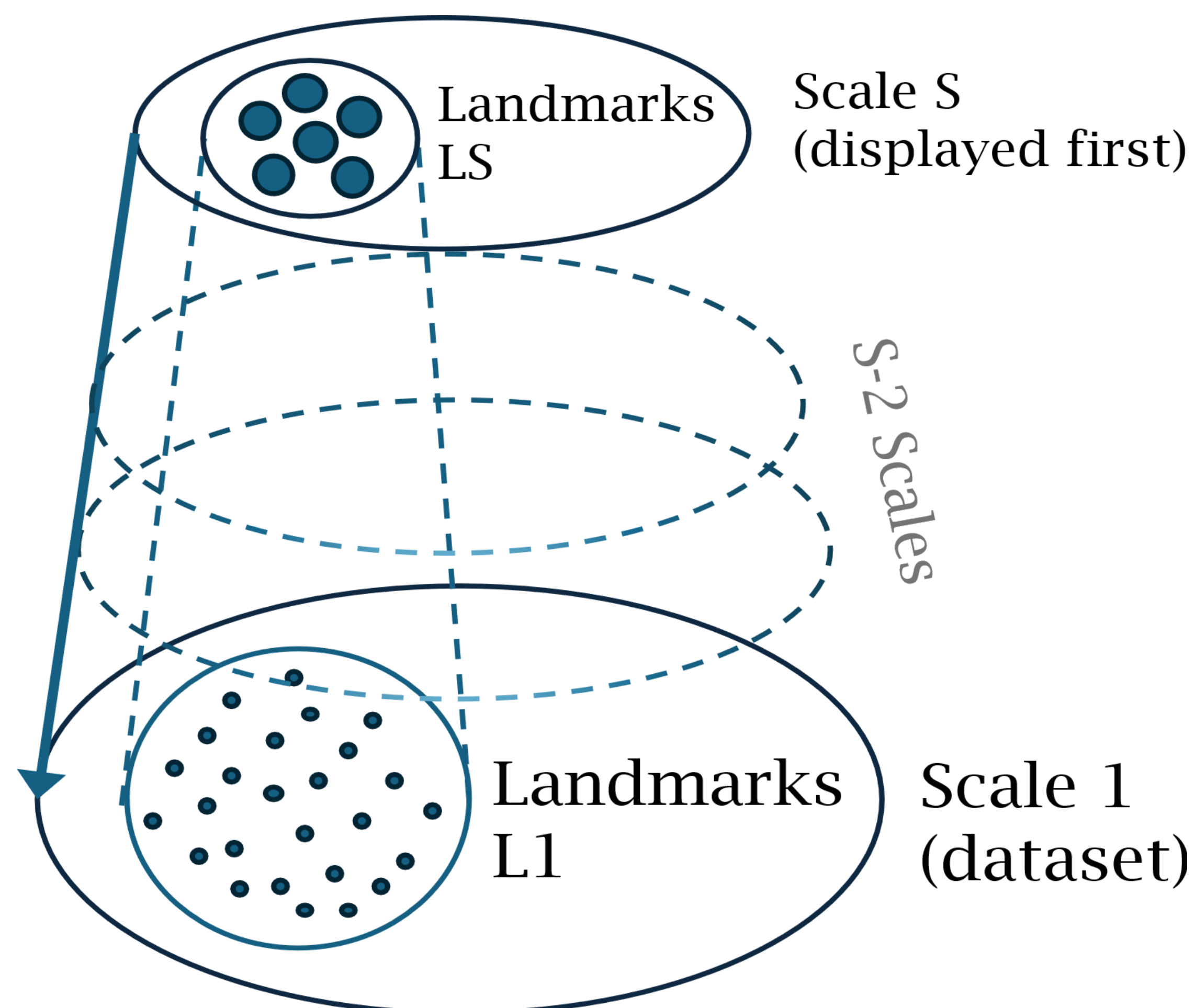


HAVANA: Hierarchical stochastic neighbor embedding for Accelerated Video ANnotAtions

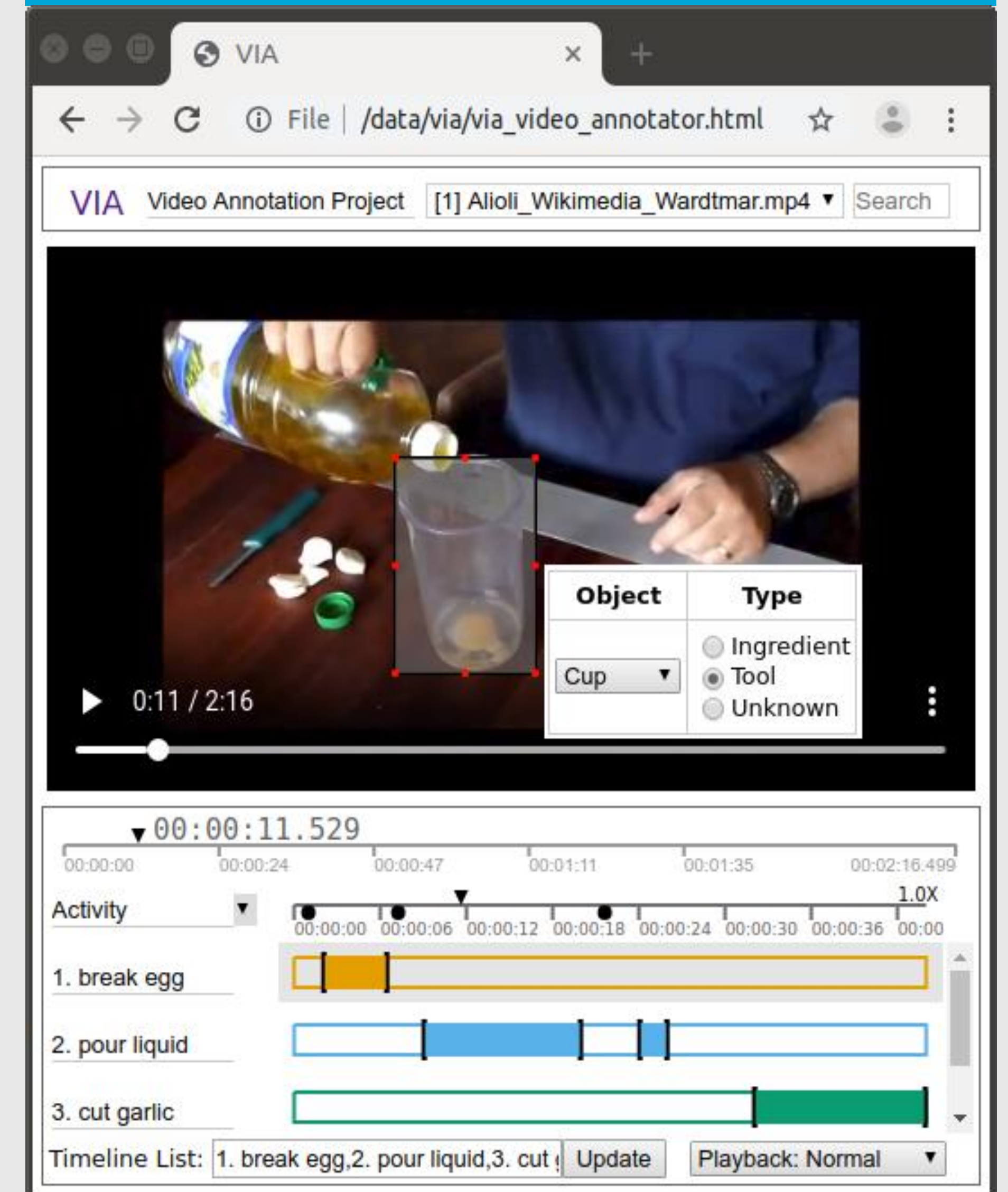
1. Motivation

- **Temporal video annotation** is expensive
- Similarities between videos used to speed up the **annotation process**
- Watching each video is not necessary
- Feature extraction and dimensionality reduction in **our pipeline**
- Suitable for large amounts of videos

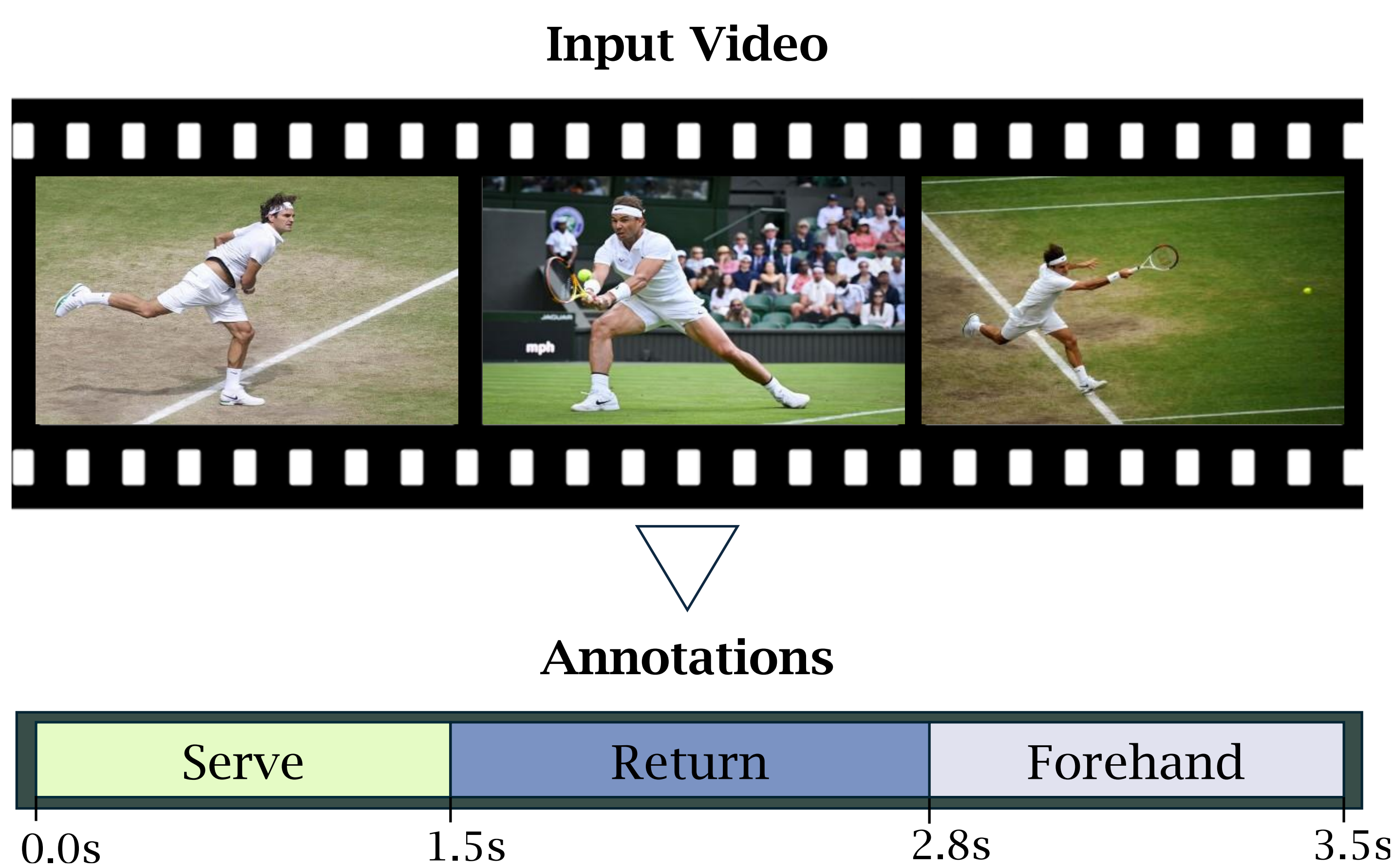
2. Hierarchical SNE



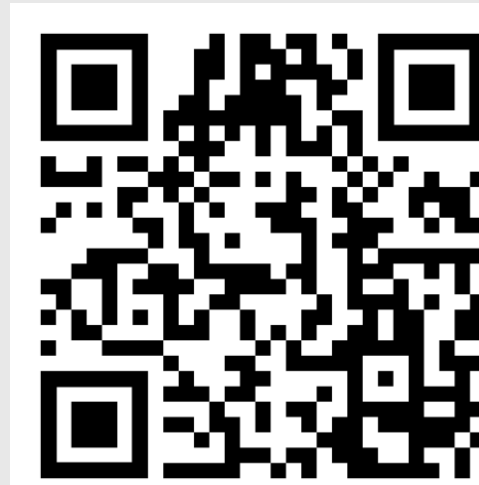
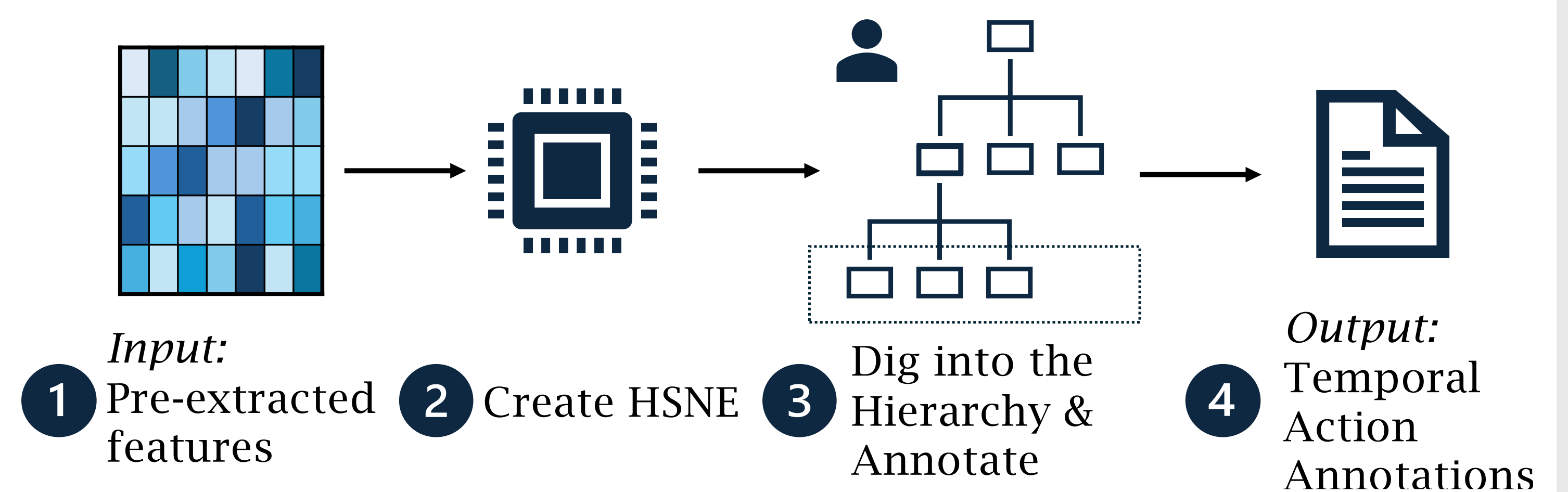
4. Before - Linear



3. Temporal Video Annotation

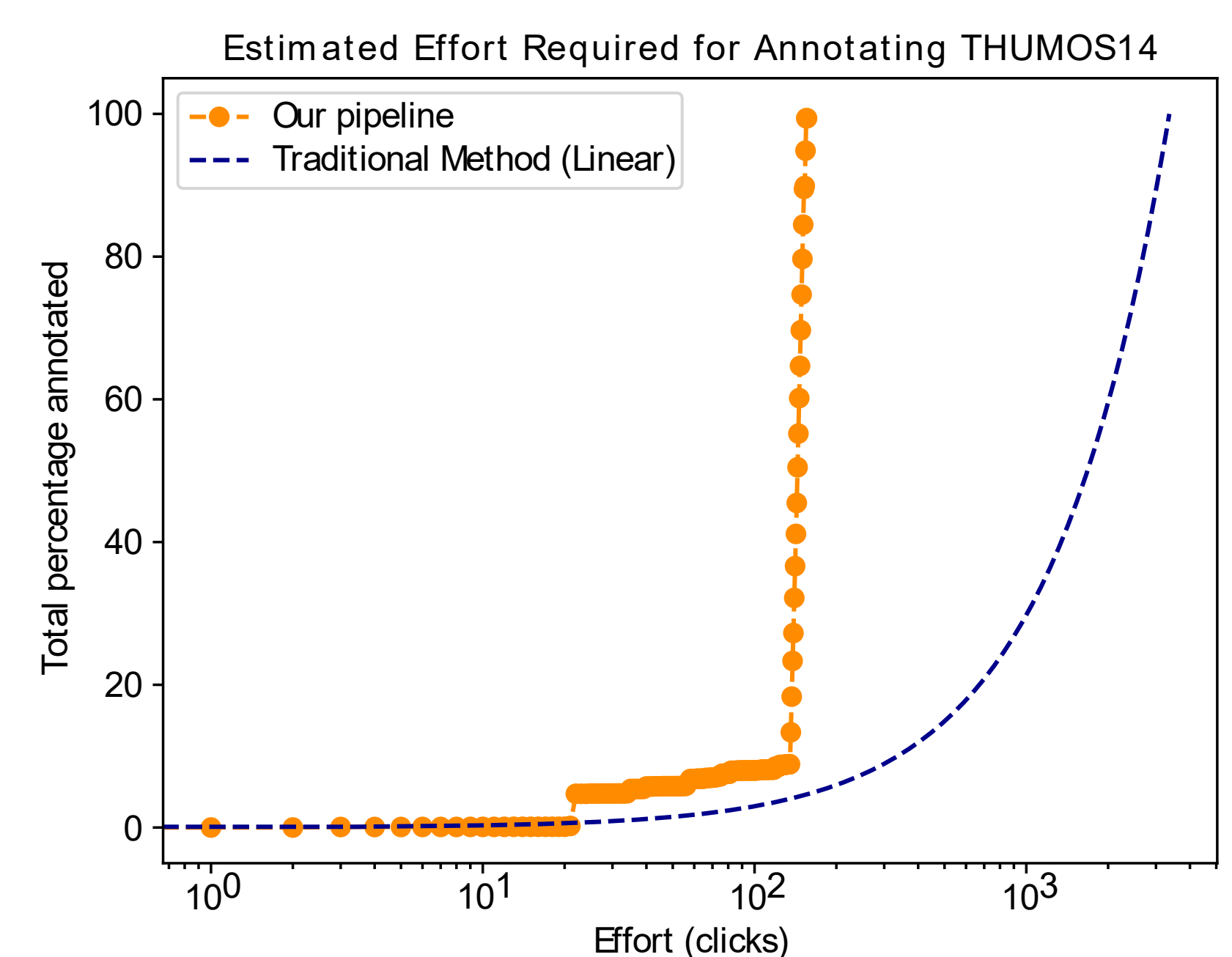


5. Our pipeline



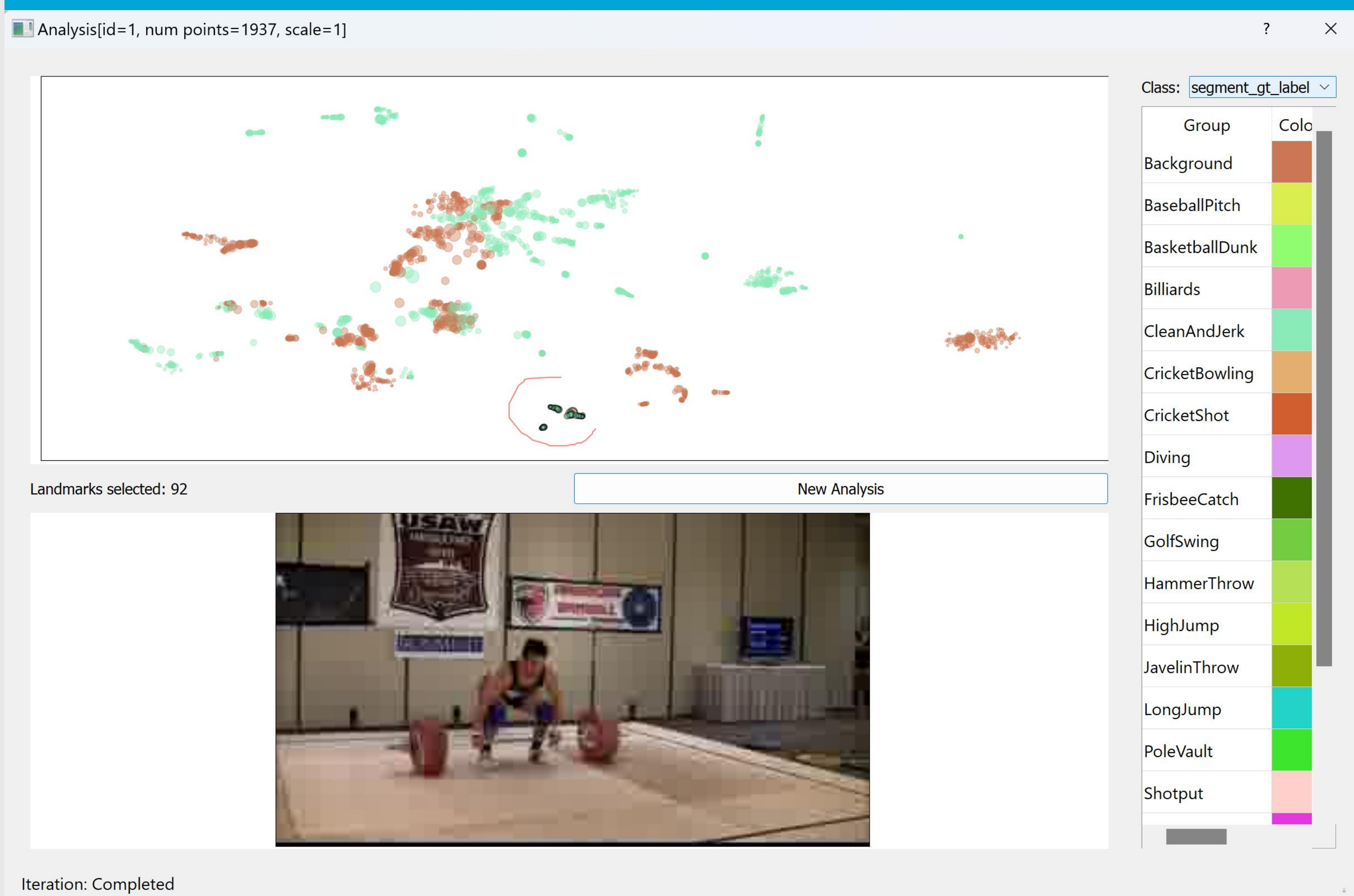
SCAN FOR THE CODE!

7. THUMOS14 Test Set



- 10x improvement in terms of *clicks* for annotating the THUMOS14 test set

6. Software Visualization



8. Conclusion

- Better than linear video annotation
- Pipeline works with multiple datasets and parameters
- Parts of the annotation can be automated to save more effort